



Station Approach, Theydon Bois, CM16

BUTLER & STAG



## SOLD OFF MARKET!

**Located in the heart of Theydon Bois village is this smart two double bedroom apartment close to Theydon Bois Station (Central Line).**



## Leasehold

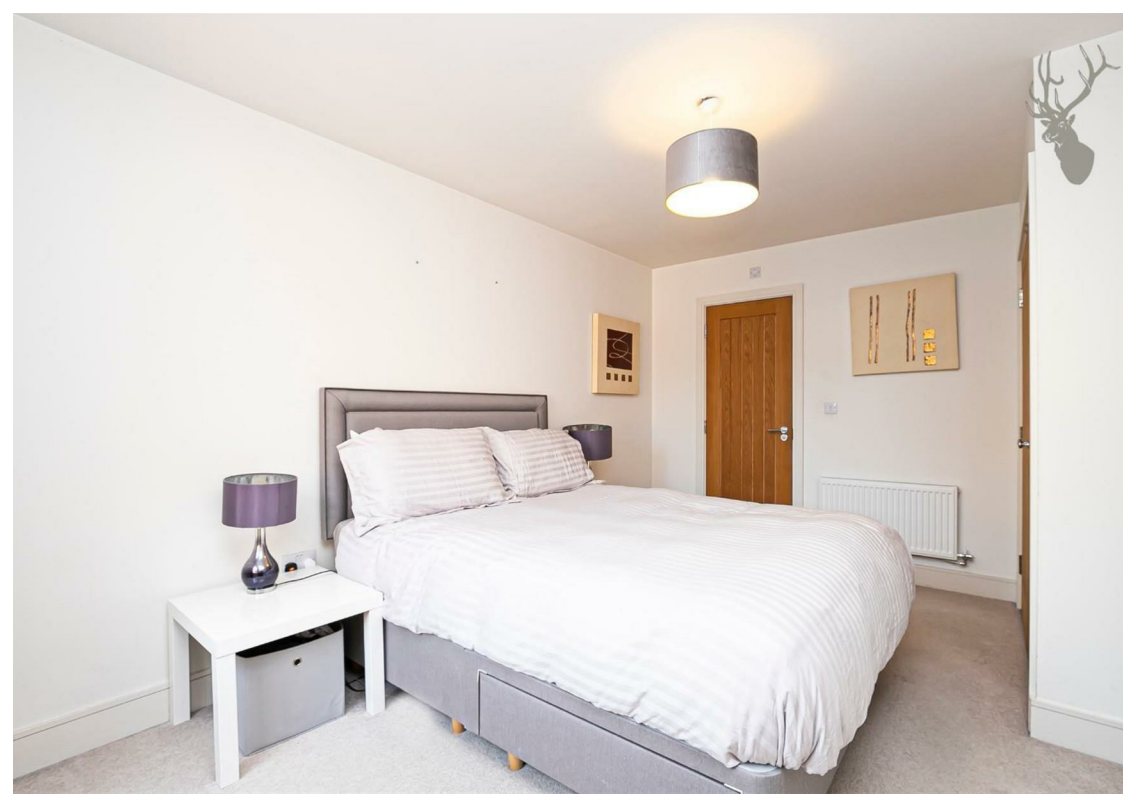
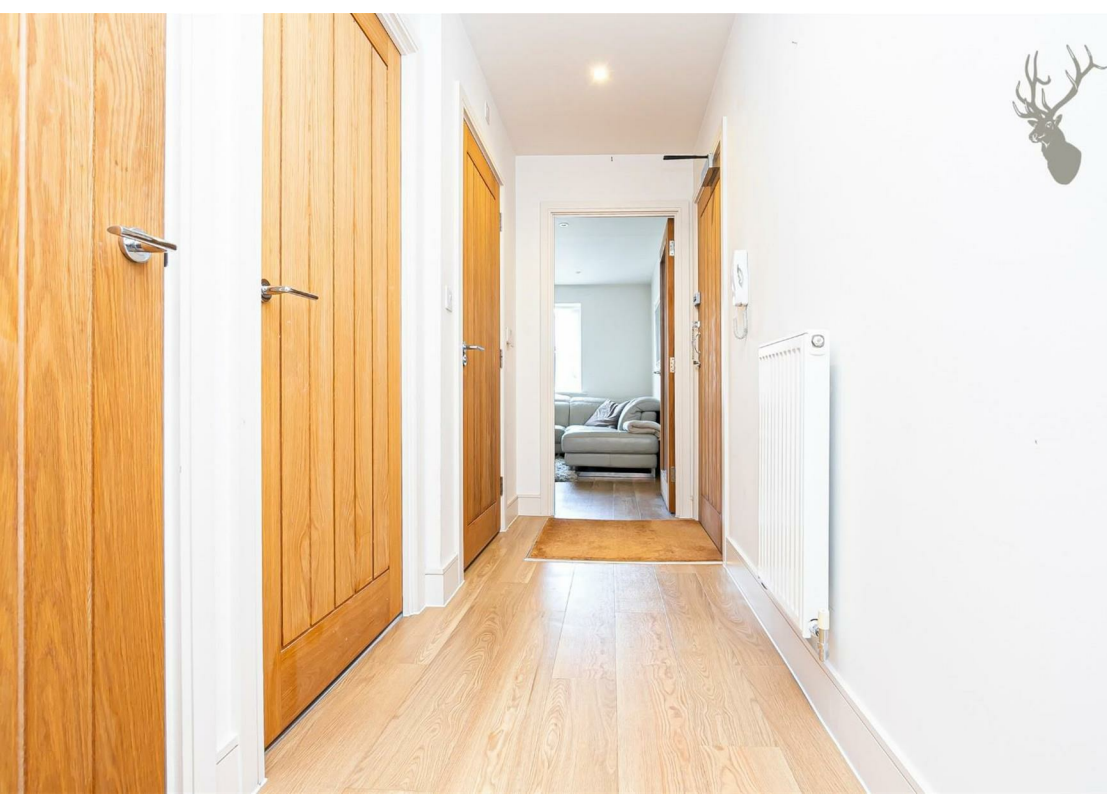
- Modern Gated Development
- Two Bedrooms/ Two Bathrooms
- Secure Parking/ Long Lease
- First Floor
- Central Village Location

Positioned on the first floor of a modern purpose built gated development, the property is in good decorative order throughout and offers over 764 sq ft/ 71 sqm of space, including a spacious open-plan kitchen reception, two double bedrooms, master with en-suite shower room and a smart three piece bathroom. There is also an added bonus of an allocated gated parking space, accessed via remote controlled security gates and a healthy long lease.

It is rare to find properties so well proportioned, both bedrooms are generous doubles and with two bathrooms.

The location is superb, less than a minutes stroll to the station and village where are a variety of amenities are at hand including shops, pubs, restaurants, village green and duck pond.

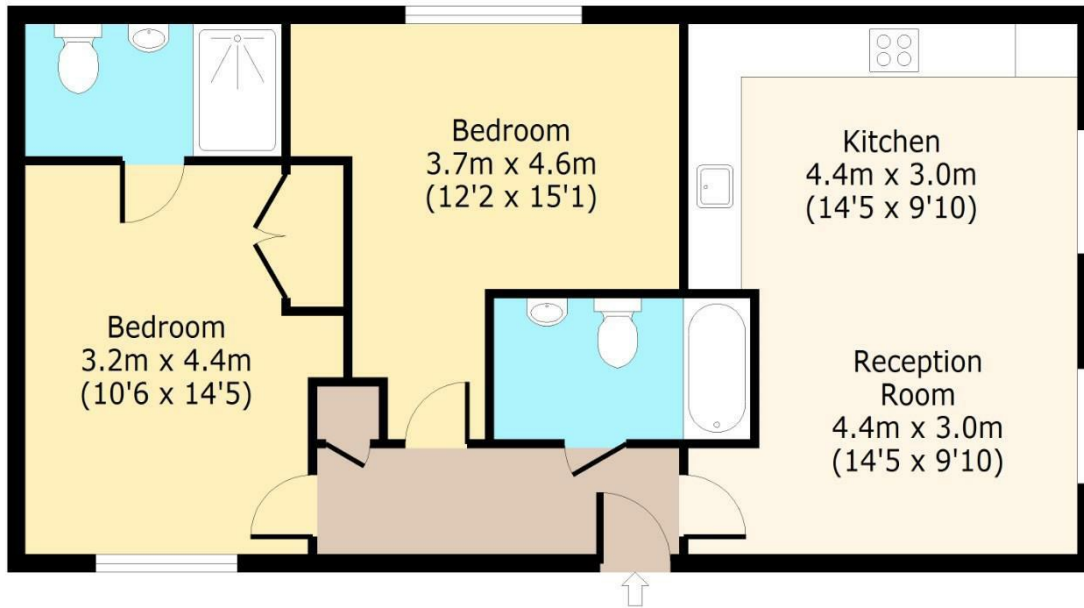




# Theydon Mews , CM16

## First Floor

Approx. 71 Sq. meters (764 Sq. feet)



Total area: approx. 71 Sq. meters (764 Sq. feet)

For illustration purposes only - not to scale

[www.londonpropertyassessments.co.uk](http://www.londonpropertyassessments.co.uk)

# BUTLER & STAG

☎ 01992 667666

🏠 4 Forest Drive, Theydon Bois, Essex, CM16 7EY

✉ [theydon@butlerandstag.com](mailto:theydon@butlerandstag.com)

[www.butlerandstag.uk](http://www.butlerandstag.uk)

IMPORTANT NOTICE - These particulars have been prepared in good faith and they are not intended to constitute part of an offer or contract. We have not performed a structural survey on this property and the services, appliances and specific fittings have not been tested. All photographs, measurements, floor plans and distances referred to are given as a guide and should not be relied upon.